

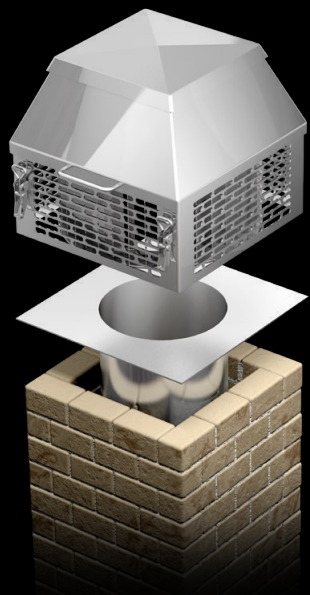
# ROOF AND BUILT-IN FANS

for heating, fireplaces, grills and ventilation systems



# ROOF FANS

The solution for all **open** firing systems



**Model HQ (square)  
for brick fireplaces**



**Model HR (round)  
for stainless steel  
fireplaces**

The particularly quiet running chimney fans are suitable for fireplaces, grills and for ventilation. However, they can also be used with heating systems or in industry. The stylish chimney fan adapts perfectly to the chimney and at the same time forms a weatherproof chimney hat. The model series is characterised by its small dimensions, high flow rate and low speed.

## Function

RSchräder-FITZEVENTINOX chimney fans support the natural draught of a fireplace efficiently and safely. The smoke gases are sucked in by the chimney fan and blown horizontally into the open air.

## Construction

The chimney fan is made of stainless steel as standard. Powder-coated variants or a copper version are also available. The engine - located outside the hot flue gases and with permanently lubricated ball bearings - ensures maintenance-free operation.

## Assembly

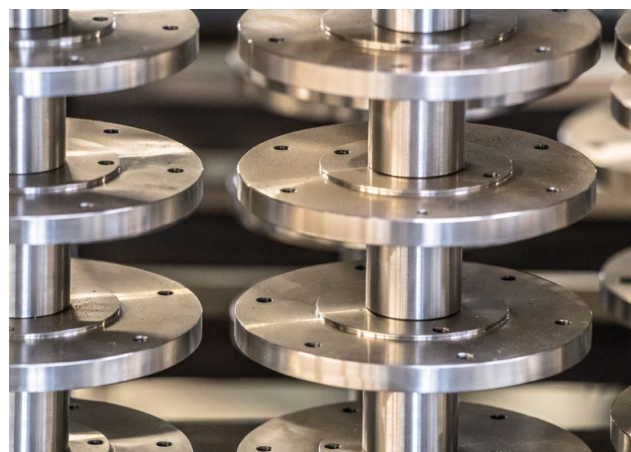
The assembly of these fans is extremely simple: the HQ model is placed on a brick chimney and screwed tight. The HR model can be mounted on a stainless steel chimney using the mounting brackets supplied.

## Electrical connection/control

The chimney fan is supplied with a 1.5 m heat-resistant cable and controlled by a speed regulator. The fan may only be controlled by a transformer controller or a frequency converter.

## Cleaning

The chimney fans can be opened in one easy step for cleaning the chimney and the impeller without tools.



## Model HQ (square) for brick fireplaces

The elegantly shaped square chimney fan fits on every square chimney. The chimney fan is screwed directly onto a brick chimney.



## Model HR (round) for stainless steel fireplaces

The round chimney fan is mounted on a round stainless steel chimney. The delivery includes mounting brackets that can be adjusted to any chimney diameter. They can easily be inserted into the chimney pipe. Drilling and sealing are not necessary.

# BUILT-IN FANS

The solution for all **closed** furnaces

Heating systems of all kinds, industrial furnaces such as melting furnaces and hardening furnaces or baking ovens are the most important areas of application for these robustly constructed radial blowers.

## Function/temperature requirements

In the RB and RG models, the flue gases with temperatures of up to 300°C are directly passed through the fan (see operating instructions). For temperatures up to 500°C special designs are available.

## Construction

The built-in fans are made of stainless steel (1.4404). The motor with permanently forged ball bearings is located outside the hot flue gases. This ensures that the fan can be operated maintenance-free for many years. A heat-resistant shaft seal prevents the flue gases from escaping.

## Electrical connection / control system

The fans are designed for a voltage of 230/400 or 400/690 Volt. The fan can be controlled by means of a frequency converter (FU) to the desired operating point.

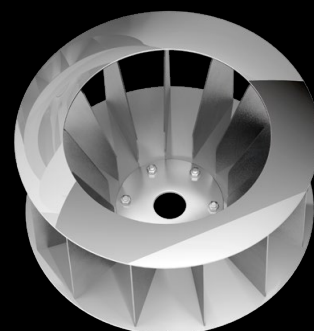
## Cleaning

The motor and impeller can be easily removed and reinstalled for cleaning. The screw connections are made of stainless material. This prevents the screw connections from getting stuck or rusting. Even after years under the toughest operating conditions, the drive set can be easily disassembled and safely reassembled for maintenance.

## Vibration damping / assembly

The fans are statically and dynamically balanced. Whether the fan should be additionally balanced on vibration compensators, must be by clarified and decided on a case-by-case basis. The fan can be installed directly and in practically any position (see operating instructions).

The backward curved blade impeller ensures safe operation even with very dusty flue gases (such as wood combustion) and is characterised by its high efficiency.



### Model RB

This pipe fan is installed instead of a pipe bend. It is especially suitable for retrofitting. It is also available in 45° and 60° degree versions.



### Model RG

This tubular fan is installed directly in a straight flue pipe.



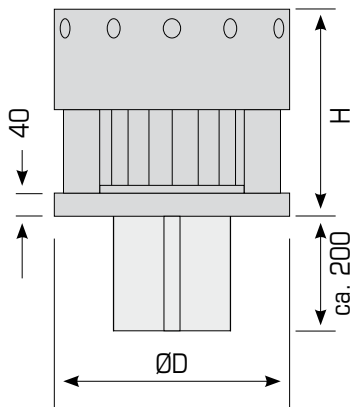
The motor can be easily and conveniently removed from the housing with the impeller for cleaning and maintenance.

# ROOF VENTILATORS - Technical data

Model HR - Smoke extractor round version					
designation	Voltage (Volt)	Power (kW)	Amp	rpm.	Weight (kg)
HR25-4	230 - 230/400	0,06	0.42/0.24	1440	12
HR30-6	230 - 230/400	0,025	0.4/0.24	950	16
HR30-4	230 - 230/400	0,12	0.8/0.45	1440	16
HR35-6	230 - 230/400	0,06	0.51/0.29	950	20
HR35-4	230 - 230/400	0,25	1.54/0.9	1440	25
HR45-6	230 - 230/400	0,25	1.75/1.0	950	30
HR45-4	230/400	0,75	3.3/1.9	1440	35

Model	ØD	H <sup>1</sup>
HR25	315	320
HR30	365	320
HR35	415	405
HR45	520	440/470
HR55	620	470/500

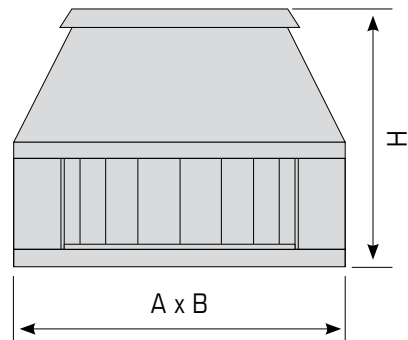
<sup>1</sup> Height varies according to speed



Model HQ - Square chimney fan					
designation	Voltage (Volt)	Power (kW)	Amp	rpm.	Weight (kg)
HQ30-6	230 - 230/400	0,025	0.4/0.24	950	16
HQ30-4	230 - 230/400	0,12	0.8/0.45	1440	18
HQ35-6	230 - 230/400	0,06	0.51/0.29	950	20
HQ35-4	230 - 230/400	0,25	1.54/0.9	1440	25
HQ45-6	230 - 230/400	0,25	1.75/1.0	950	30
HQ45-4	230/400	0,75	3.3/1.9	1440	35

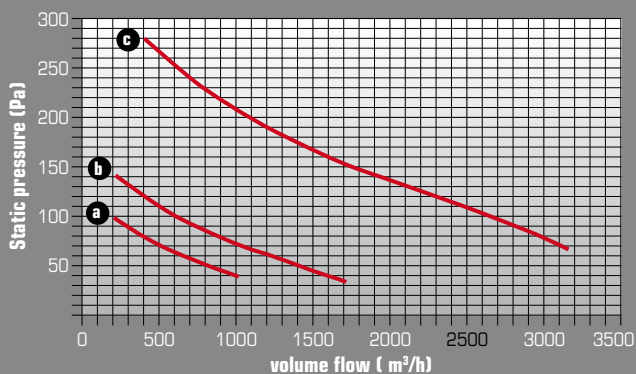
Model	A	B	H <sup>1</sup>
HQ30	300	300	300
HQ35	400	400	390
HQ45	500	500	420/450
HQ55	600	600	450/480

<sup>1</sup> Height varies according to speed

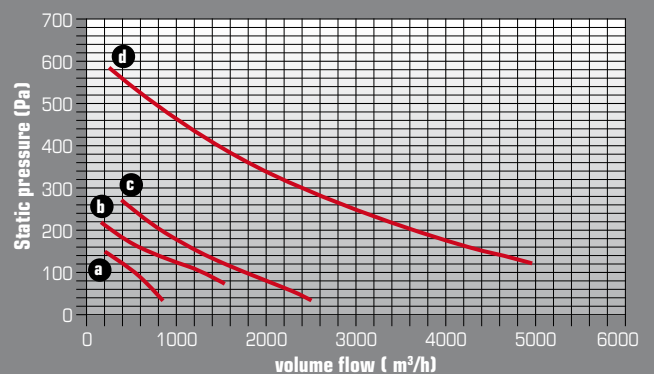


## power curves

(operating temperature 20°C - altitude 600 m above sea level)



- a HQ30-6 / HR30-6
- b HQ35-6 / HR35-6
- c HQ45-6 / HR45-6



- a HR25-4
- b HQ30-4 / HR30-4
- c HQ35-4 / HR35-4
- d HQ45-4 / HR45-4



# BUILT-IN FANS - Technical data

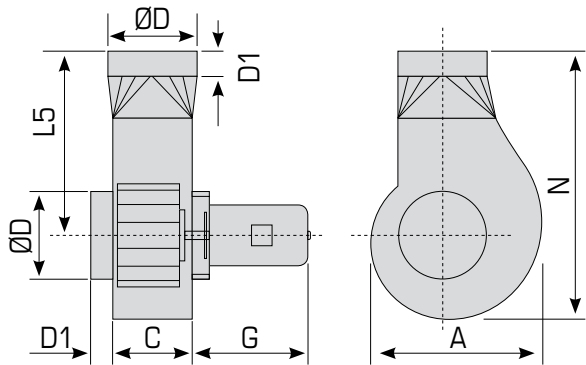
## Model RB

designation	Voltage (Volt)	Power (kW)	Amp	rpm.	Weight (kg)
RB1R-4D	230/400	0,12	0.78/0.45	1440	12
RB2R-4D	230/400	0,12	0.78/0.45	1440	14
RB3R-4D	230/400	0,18	1.3/0.65	1440	22
RB4R-4D	230/400	0,55	1.5/0.85	1440	30
RB5R-4D	230/400	1,5	2.5/1.45	1440	44
RB1R-2D	230/400	0,18	0.89/0.51	2880	12
RB2R-2D	230/400	0,25	0.89/0.51	2880	14
RB3R-2D	230/400	0,37	1.7/1.0	2880	22
RB4R-2D	230/400	0,75	3.3/1.9	2880	30
RB5R-2D	230/400	1,5	5.7/3.3	2880	44
RB6R-2D	400/690	3	10.7/6.2	2880	66

model	A	C	ØD <sup>1</sup>	D1	G <sup>2</sup>	L5	N
.. 1	256	123	120-200	50	230	306	430
.. 2	313	125	150-220	50	230	348	500
.. 3	351	160	180-250	50	280	380	550
.. 4	443	160	200-300	50	310	435	650
.. 5	552	200	250-400	100	350	529	802
.. 6	658	200	300-500	100	400	650	970

<sup>1</sup> We supply (almost) every diameter

<sup>2</sup> This dimension may vary depending on the make of motor.



## Model RG

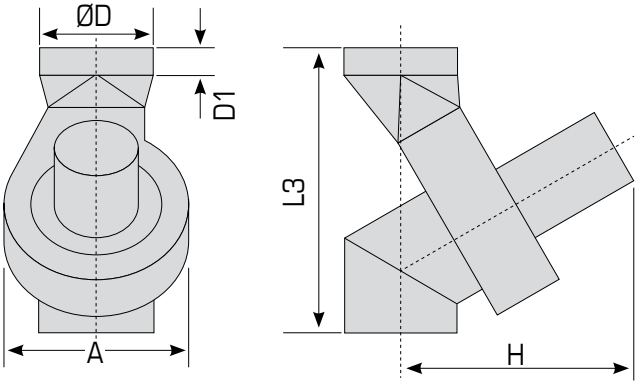
designation	Voltage (Volt)	Power (kW)	Amp	rpm.	Weight (kg)
RG1R-4D	230/400	0,12	0.78/0.45	1440	13
RG2R-4D	230/400	0,12	0.78/0.45	1440	15
RG3R-4D	230/400	0,18	1.3/0.65	1440	24
RG4R-4D	230/400	0,55	1.5/0.85	1440	35
RG5R-4D	230/400	1,5	2.5/1.45	1440	48
RG1R-2D	230/400	0,18	0.89/0.51	2880	13
RG2R-2D	230/400	0,25	0.89/0.51	2880	15
RG3R-2D	230/400	0,37	1.7/1.0	2880	24
RG4R-2D	230/400	0,75	3.3/1.9	2880	33
RG5R-2D	230/400	1,5	5.7/3.3	2880	48
RG6R-2D	400/690	3	10.7/6.2	2880	76

model	A	ØD <sup>1</sup>	D1	H <sup>2</sup>	L3 <sup>3</sup>
.. 1	256	120-200	50	380	450
.. 2	313	150-220	50	380	520
.. 3	351	180-250	50	400	550
.. 4	443	200-300	50	150	650
.. 5	552	250-400	100	500	800
.. 6	658	300-500	100	600	1100

<sup>1</sup> We supply (almost) every diameter

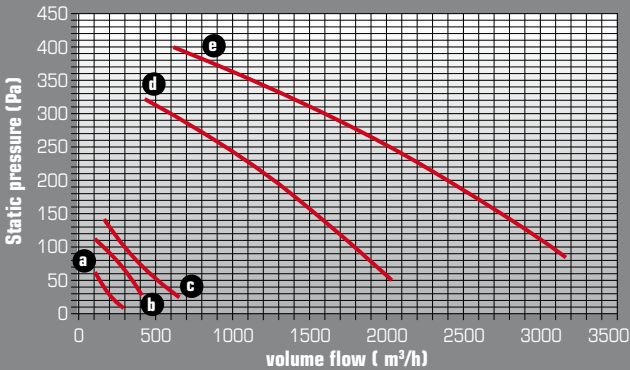
<sup>2</sup> This dimension may vary depending on the make of motor.

<sup>3</sup> This dimension may vary depending on the pipe diameter.

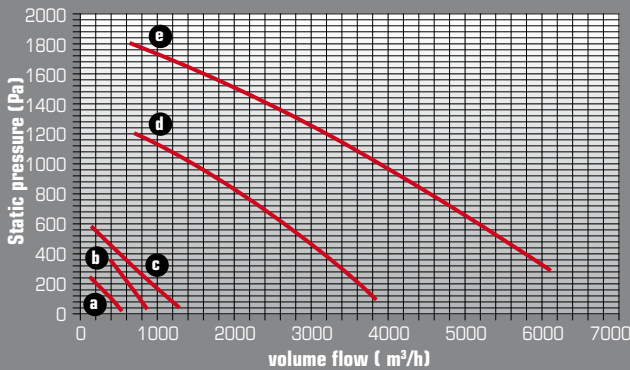


## power curves

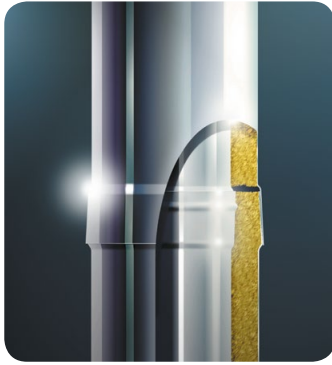
(operating temperature 20°C - altitude 600 m above sea level)



- a RB / RG1r-4
- b RB / RG2r-4
- c RB / RG3r-4
- d RB / RG5r-4
- e RB / RG6r-4



- a RB / RG1r-2
- b RB / RG2r-2
- c RB / RG3r-2
- d RB / RG5r-2
- e RB / RG6r-2



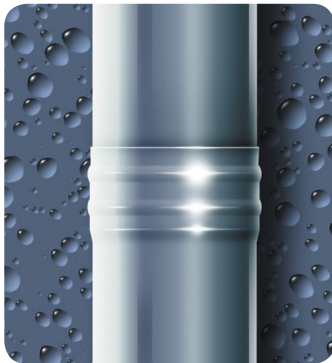
#### FUTURE DW

Double-walled chimney system for standard fireplaces in the over- and underfloor area Vacuum range. Insensitive to moisture, pressure-tight and as CHP line can be used.



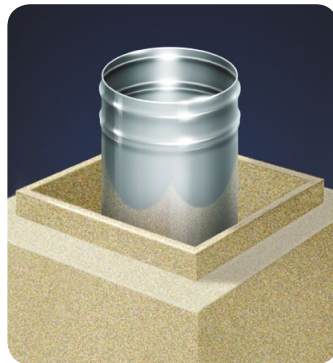
#### FUTURE EW

Single-walled chimney system for standard fireplaces in the over- and underpressure range. Insensitive to moisture, pressure-tight and can be used as a CHP line.



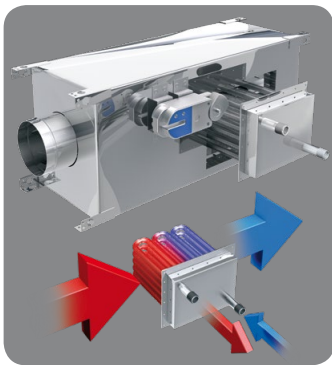
#### SANRO AQUA

The moisture-insensitive insert tube for all exhaust gas temperatures.



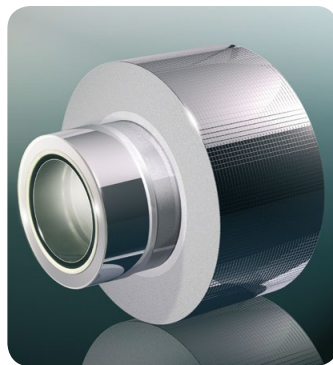
#### FUTURE THERM

Chimney system with shaft for all standard fireplaces for renovation and new construction.



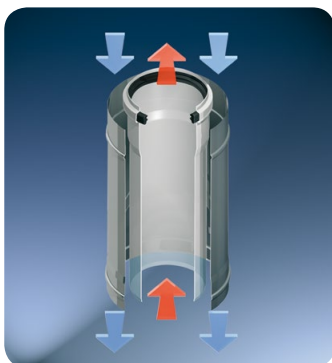
#### HEAT RECOVERY

Intelligent use of industrial waste heat



#### WALL DUCT

The safest way of wall ducting. Ideal for all drywall houses.



#### FUTURE PP

Plastic exhaust pipe for condensing and low temperature applications.



#### REDUCTION OF FINE DUST

Fine dust filter for wood firing systems in the power range up to 1.2 MW

**The Schröder product range with special systems for individual requirements. Perfectly matched components guarantee optimum functionality and maximum efficiency for every requirement.**

#### Quality has its origin.....

Only foresighted technology has a chance today. For Schröder, this means that even proven design methods have to be continuously further developed in order to enable functional and economical manufacturing processes.

It is clear that this demand can only be met with the highest demands on the material on which production is based. Schröder therefore only uses high-quality stainless steel VA for its components (material 1.4301, 1.4404, 1.4539, 1.4571, 1.4828). The fact that the 100% recyclability of this material also noticeably reduces the environmental impact has been part of our company philosophy for decades.

But only a continuous and effective quality control - in combination with modern technology, forward-looking Manufacturing methods and many years of experience in chimney technology - the manufactured product becomes a precisely fitting wheel component.

For this reason, the entire production process is subject to continuous monitoring in order to guarantee the end product an optimum service life.

**It repeatedly shows:  
QUALITY IS NOT A RESULT OF COINCIDENCE BUT  
RESULTS OF ACCURACY, SUSTAINABILITY AND  
INNOVATION!**

K. Schröder Nachf. · Hemsack 11-13  
59174 Kamen  
Tel.: +49 (0)23 07 / 9 73 00-0  
Fax: +49 (0)23 07 / 9 73 00-55  
E-Mail: [kamen@schraeder.com](mailto:kamen@schraeder.com)  
[www.schraeder.com](http://www.schraeder.com)

K. Schröder Nachf. · Neue Siedlung 1  
04509 Schönwölkau · OT Badrina  
Tel.: +49 (0)3 42 08 / 7 41-0  
Fax: +49 (0)3 42 08 / 7 41-19  
E-Mail: [badrina@schraeder.com](mailto:badrina@schraeder.com)

 **SCHRÄDER**  
created by **FITZEVENTINOX**