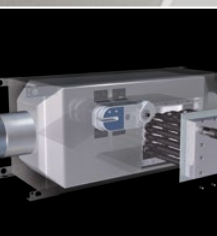
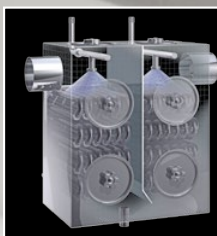
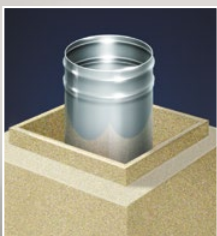
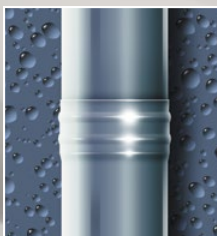
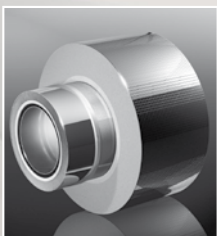
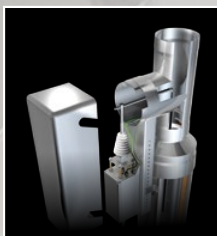
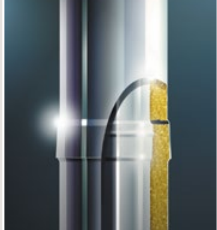


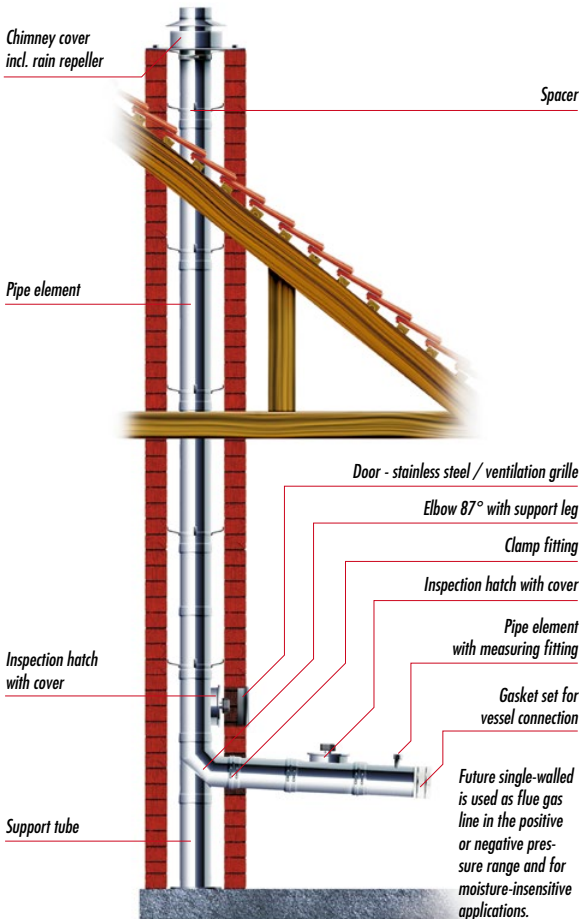
# CHIMNEY ENGINEERING OF THE FUTURE



# **FUTURE** ew

Single-walled chimney system for standard heating systems operating with positive or negative pressure. It is insensitive to moisture, pressure-tight and can be used as line for cogeneration plants (CHP).

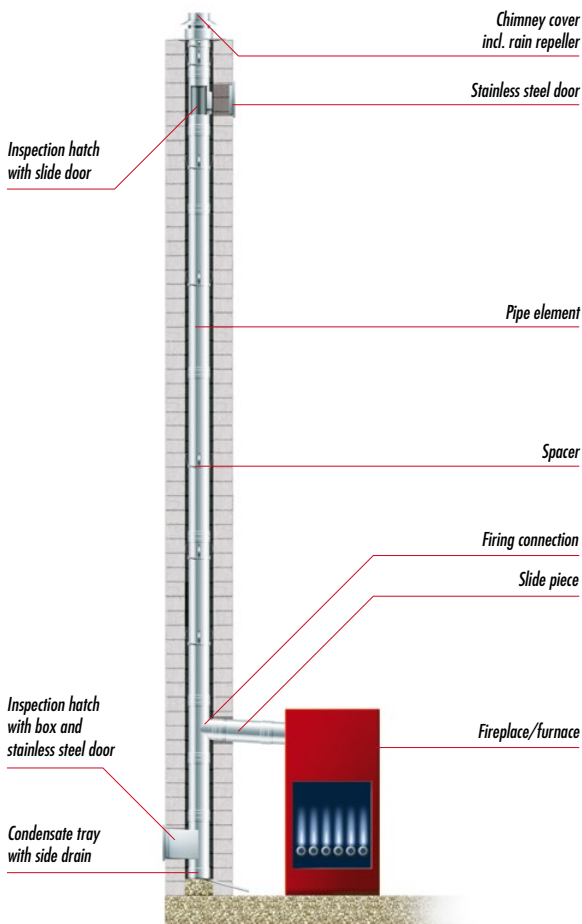
- Split logs
- Wood pellets
- CHP
- Oil and gas
- Economical pricing due to rational manufacturing technology
- Streamlined warehousing due to new modular system
- Reduced assembly time due to simple push-fit assembly
- High degree of tightness due to new cone shape
- Moisture-insensitive flue gas line operating in the positive and negative pressure range.



# Sanroaqua

The moisture-insensitive insert pipe for all flue gas temperatures.

- Split logs
- Wood pellets
- Oil and gas
- Stainless steel
- Up to a diameter of 600 mm
- Vapour-tight without seals
- Custom-fitted connection system
- Stable design

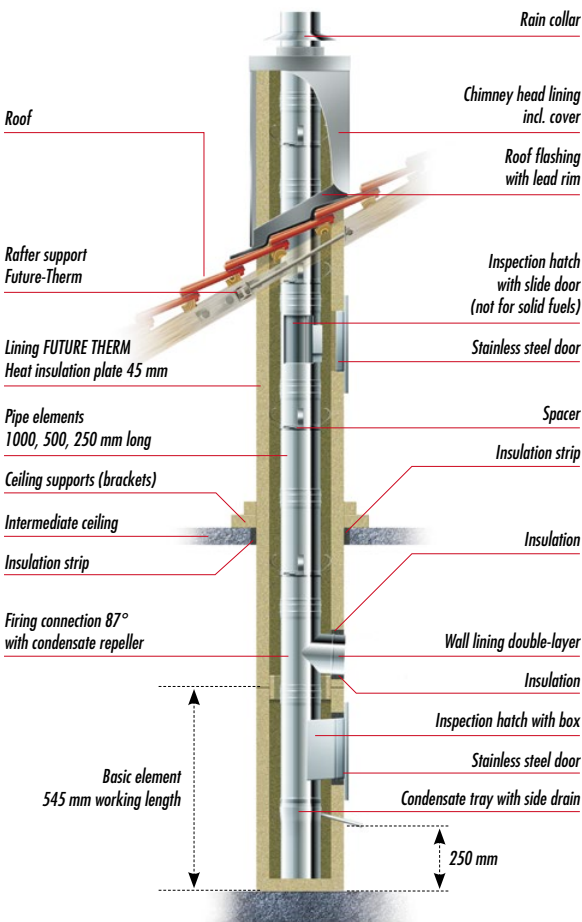


THE TRIED AND TESTED OPTION

# FUTURETHERM

Chimney system with a shaft for all standard heating appliances, suitable for restructuring and new construction

- Split logs
- Wood pellets
- Oil and gas
- Suitable for all standard heating appliances
- Fire-resistance rating L 90
- Easy assembly due to its low weight
- Space-saving design
- Short assembly time due to modular system
- No additional installation of sealing sleeves required



# **FUTURE** CuPlus

High-quality copper surface in established stainless steel technology using the innovative material CopperPlus.

- Split logs
- Wood pellets
- Oil and gas
- Real copper outer casing
- Reduced assembly time due to simple push-fit assembly
- Suitable for all standard heating appliances
- High degree of tightness and stability due to conical push-fit connection
- Economical pricing due to rational manufacturing technology

Orifice closure

Pipe element

Wall bracket, adjustable

Firing connector 90° with repeller

Inspection hatch with box

Console / foundation plate with vertical drain

*Future CuPlus is an innovative solution, which uses a metal compo-site material. For this material stainless steel and copper are firmly bonded by means of plating.*

*In chimney engineering this means that this type of chimney has the same static properties as the estab-lished Future DW system so that assembly and installation are equally easy and straight-forward. It goes without saying that the conical push-fit connections are a standard feature and that clamp fittings are no longer required in the vertical line.*

Pipe element

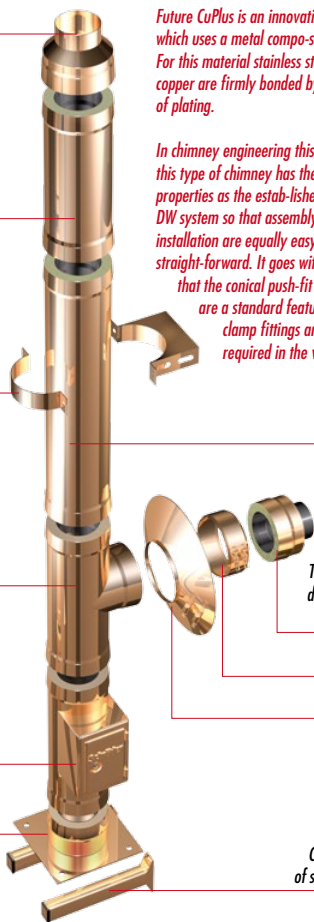
Transition zone double-walled/  
single-walled

Clamp fitting

Collar

Consoled made of square profiles

THE PRICE BREAKER



# Wallbushing

The safest kind of wall bushing. Ideally suited for all dry-wall construction houses and wooden houses.

The wall and ceiling lead-through is used in any areas where the flue gas line is led through constructions made of flammable materials. Due to its being equipped with a new type of fibreglass insulation, it achieves an insulation effect that is many times higher than that of conventional materials such as mineral rock wool. A special composite material makes it possible for the outside of the wall, ceiling and roof lead-through to get in direct contact with flammable components..

*Stainless steel connection clamp ring*

*Heating appliance connection*

*Double-walled stainless steel pipe*

*Stainless steel firing connection*

*VERMICULIT® front plate*

*wall bushing*

*Stainless steel connection collar*

*e.g. stainless steel pipe, double-walled, 500 mm, can be cut to length*

THE CUSTOMISED OPTION

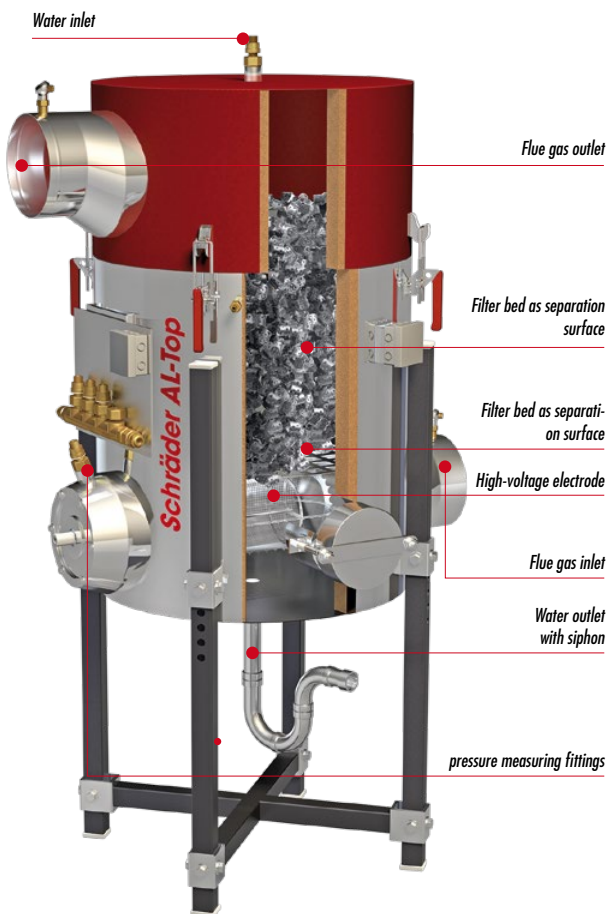
# AL-Top

The Schröder AL-Top is a new type of fine dust filter for firing plants using solid fuels, based on the principle of corona discharge.

- Compact design
- Low energy consumption
- High cleaning capacity:
- Degree of separation 82% according to expert analysis report
- Automatic filter cleaning and cleaning detection
- Low wear and low maintenance requirements
- Retrofittable
- Output capacities: up to 300 kW
- Parallel connection is possible

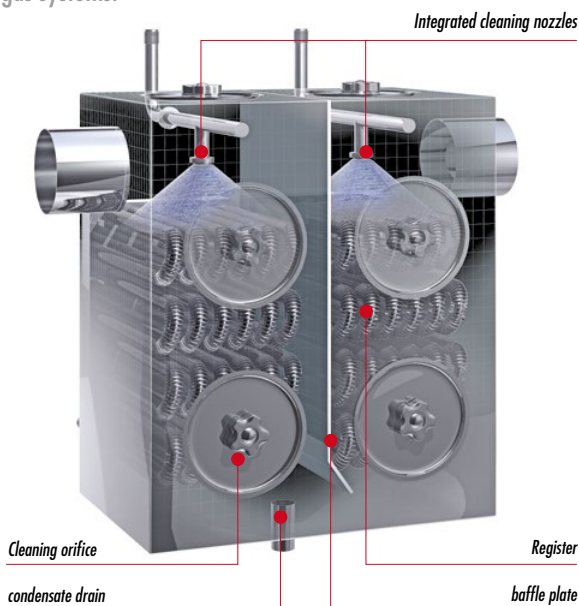
**DESIGN PLUS**

powered by: **ISH**



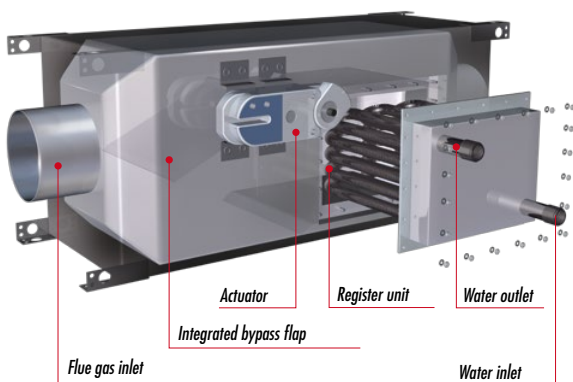
# AWT-Top

System for heat recovery and exploitation of the calorific value. For heating appliances, exhaust air and industrial flue gas systems.



# AWT-flue gas heat exchanger

Industrial flue gas heat recovery system from 15 to 1000 kW. The individually customised and tailored design guarantees a high efficiency, ranging from a small workshop heating through to industrial furnaces in series connection.

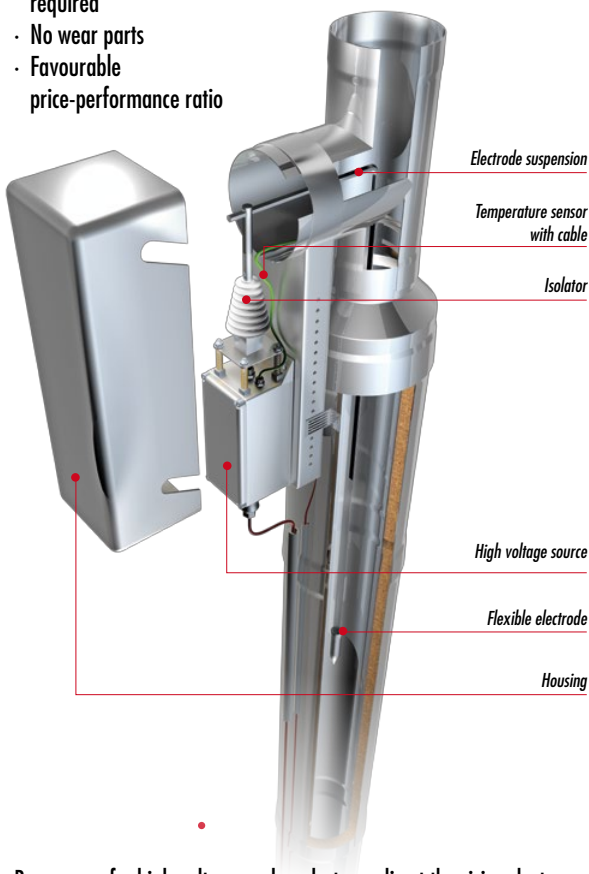




# OekoTube

An electrostatic fine dust separator, which significantly reduces the emission of harmful fine dust from wood-fired single room heating appliances (fireplaces, pellet and tiled stoves).

- No draught or pressure loss
- Even the smallest particles are separated
- Low maintenance and operating costs
- No cleaning in living spaces required
- No wear parts
- Favourable price-performance ratio
- Convenient: Both new buildings and existing wood heating appliances can be comfortably retrofitted with the **OekoTube** system
- Easy assembly



By means of a high voltage probe, electrons direct the rising dust particles towards the chimney wall. There, the fine dust deposits in the form of coarse soot and is removed by the chimney sweep during the next cleaning operation.

# U-FILTER

The U filter is an electrostatic separator unit that significantly reduced the emission of fine dust in case of wood firing.

The separator is suitable for any kind of wood firing method, such as logs, wood chips, or pellets with an output of up to 180 kW. It is also possible to realise plants with a higher nominal heat output by means of parallel connection. The U filter is characterised by its simple design and shape. Due to use of the fine dust filter, a flue gas heat exchanger can be installed downstream and thus increase the efficiency of your heating plant.

**Assembly:** The U filter is installed directly downstream of the heating vessel.

**Particle separation:** The U filter achieves a separation output of up to 70 %.

**Operation:** Parameterisation and signal indication of the U filter is performed via a display. Cleaning intervals and operating hours counter options can be set following the menu navigation.



Boiler output: .....kW      Degree of efficiency: .....%  
Burner rating: .....kW  
Boiler/Oven run time days .....      per year hours per day .....  
Fuel: .....

## FLUE GAS SIDE

Medium: Waste gases from combustion Exhaust air Contaminations  
(e.g. dust, chemical residues):.....  
.....

Mass flow: ..... kg/h Volume      flow: .....m<sup>3</sup>/h  
Maximum operating pressure: .....bar  
Permitted loss of pressure: .....Pa      Inflow temperature: .....°C  
Desired post assembly position:  horizontal  vertical

## SECONDARY CIRCUIT (HEATING WATER)

Mass flow: ..... kg/h Volume      flow: .....m<sup>3</sup>/h  
Maximum operating pressure: .....bar  
Permitted loss of pressure: .....mbar  
Inflow temperature: ..... min.:      max.: .....°C  
Discharge temperature:..... min.:      max.: .....°C

## FLUE GAS SYSTEM

Diameter: mm Length of connecting line: .....m  
Flue height: .....mTEM

## FAX REPLY TO: +49 23 07 / 9 73 00 55

Company: Last name, First name: .....  
Street: .....  
Postal Code .....      Place: .....  
Telephone/Fax: E-Mail: .....  
.....  
.....



Hemsack 11-13 · 59174 Kamen · Germany  
Tel.: +49 (0)23 07 / 9 73 00-0  
Fax: +49 (0)23 07 / 9 73 00-55  
Internet: www.schraeder.com  
e-mail: kamen@schraeder.com

Neue Siedlung 1  
04509 Schönwölkau, OT Badrina · Germany  
Tel.: +49 (0)3 42 08 / 7 41-0  
Fax: +49 (0)3 42 08 / 7 41-19  
e-mail: badrina@schraeder.com